



BUILDING THE WORLD'S NEXT MAJOR HIGH-GRADE GOLD MINE



INTEGRATION OF THE MINE VENTILATION SYSTEM WITH THE FIRE EMERGENCY PLAN BURITICÁ PROJECT

Edward Oswaldo Leal Martínez
September 2019

- Integrate the company's fire emergency plan with the ventilation system in the next two years of operation.
- Determine the required activities to implement ventilation changes in case of fire in the mine.
- Establish the most adequate evacuation routes based on fire simulations in the mine.
- Determine safety parameters for specified evacuation routes.

As it is widely known, fire is caused by three elements: fire, heat and oxygen. In many underground fires, an immediate decision is blocking the entry of oxygen, suspending main ventilation.

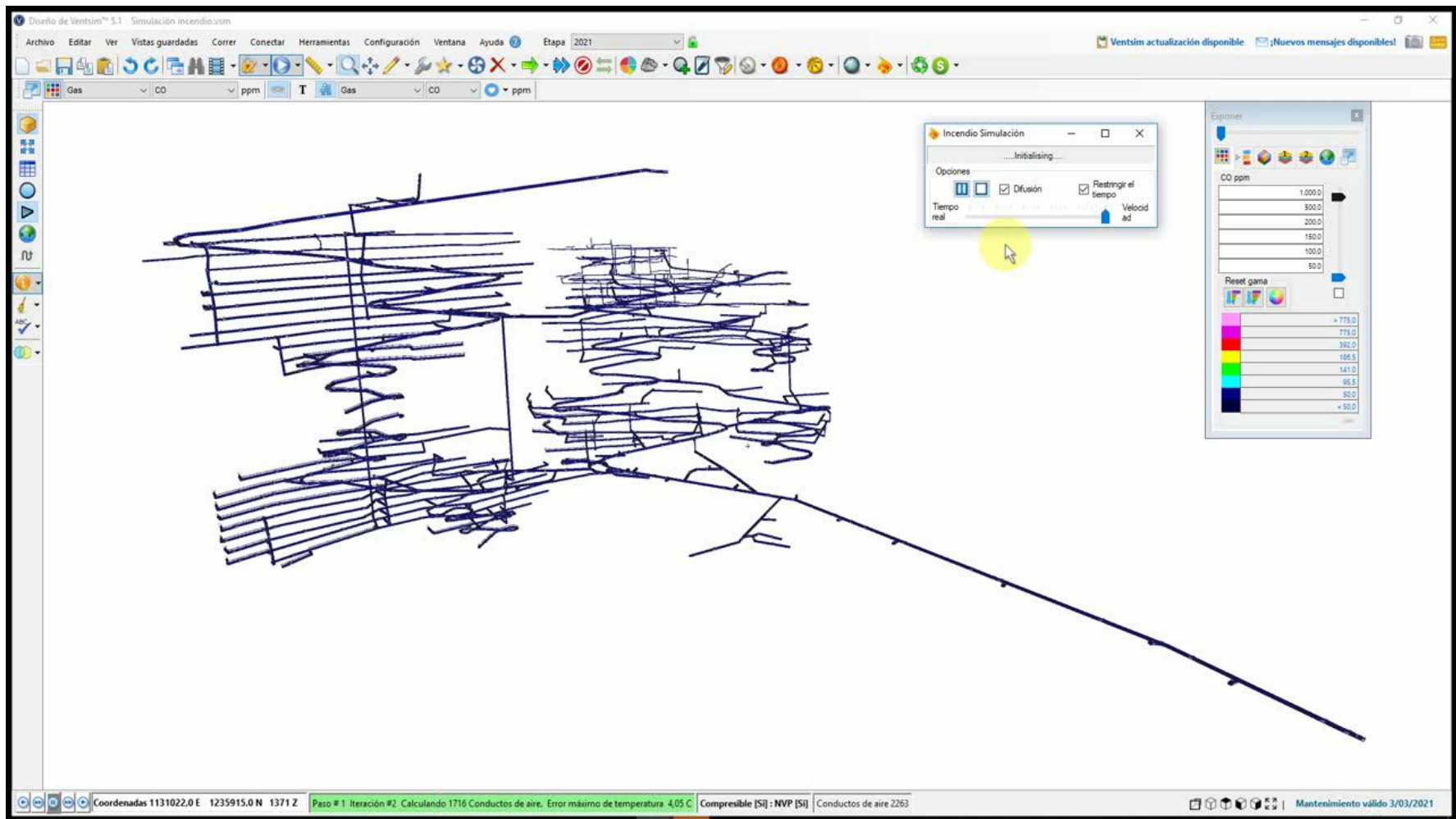
However, if there is personnel inside during the fire, it is important to maintain acceptable environmental conditions for evacuation. At this point, main ventilation is important because it allows us to minimize smoke spread through the mine.

MINING PROJECT AREAS

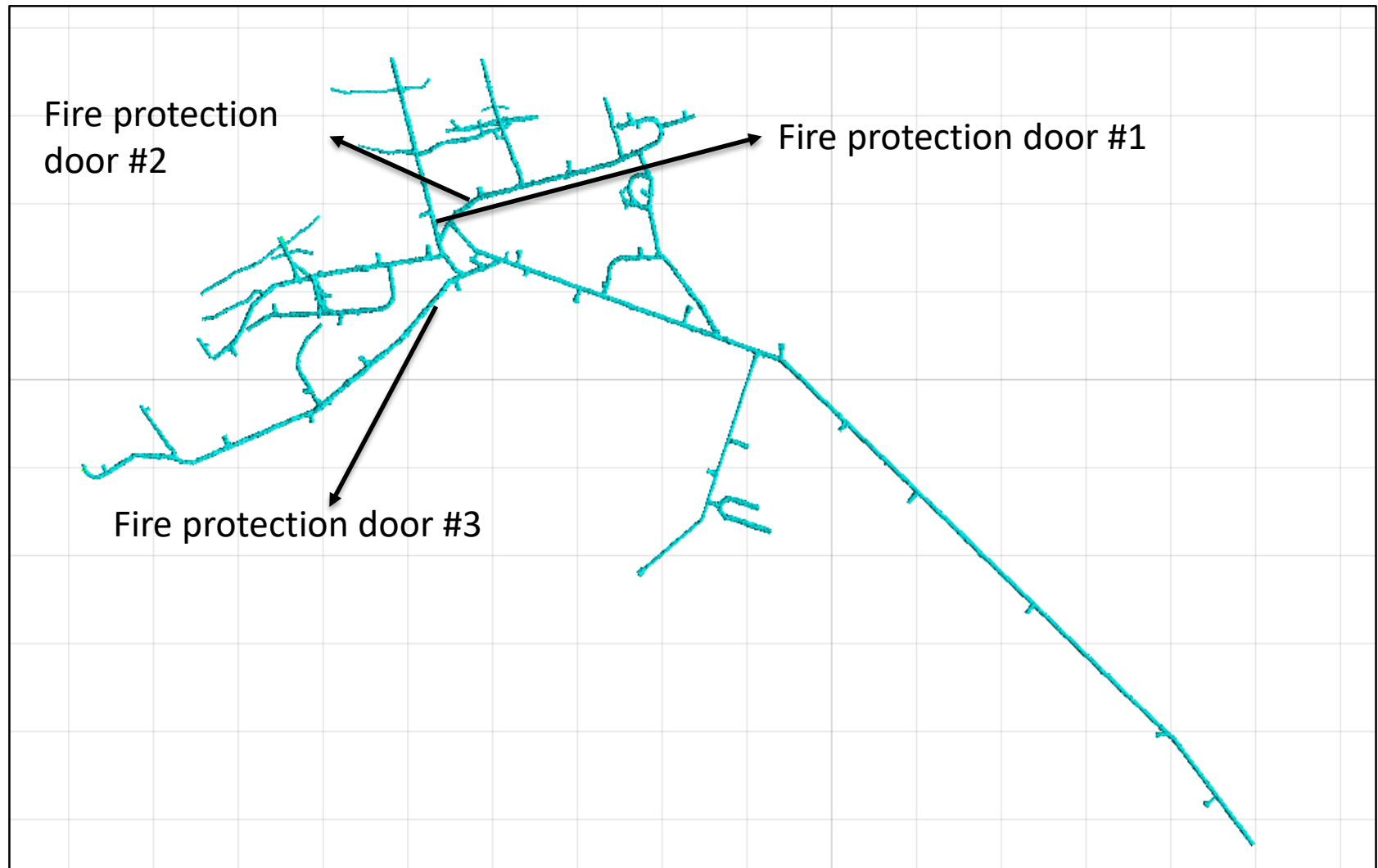


- Surface infrastructure at each mine entry with air intake.
- Higabra tunnel
- Higabra: working area – south seam
- Higabra: working area – Yaraguá seam
- Yaraguá upstream 9552 connector
- Yaraguá downstream 9552 connector
- South seam: exhausting vent area

FIRE SCENARIO ASSESSMENT



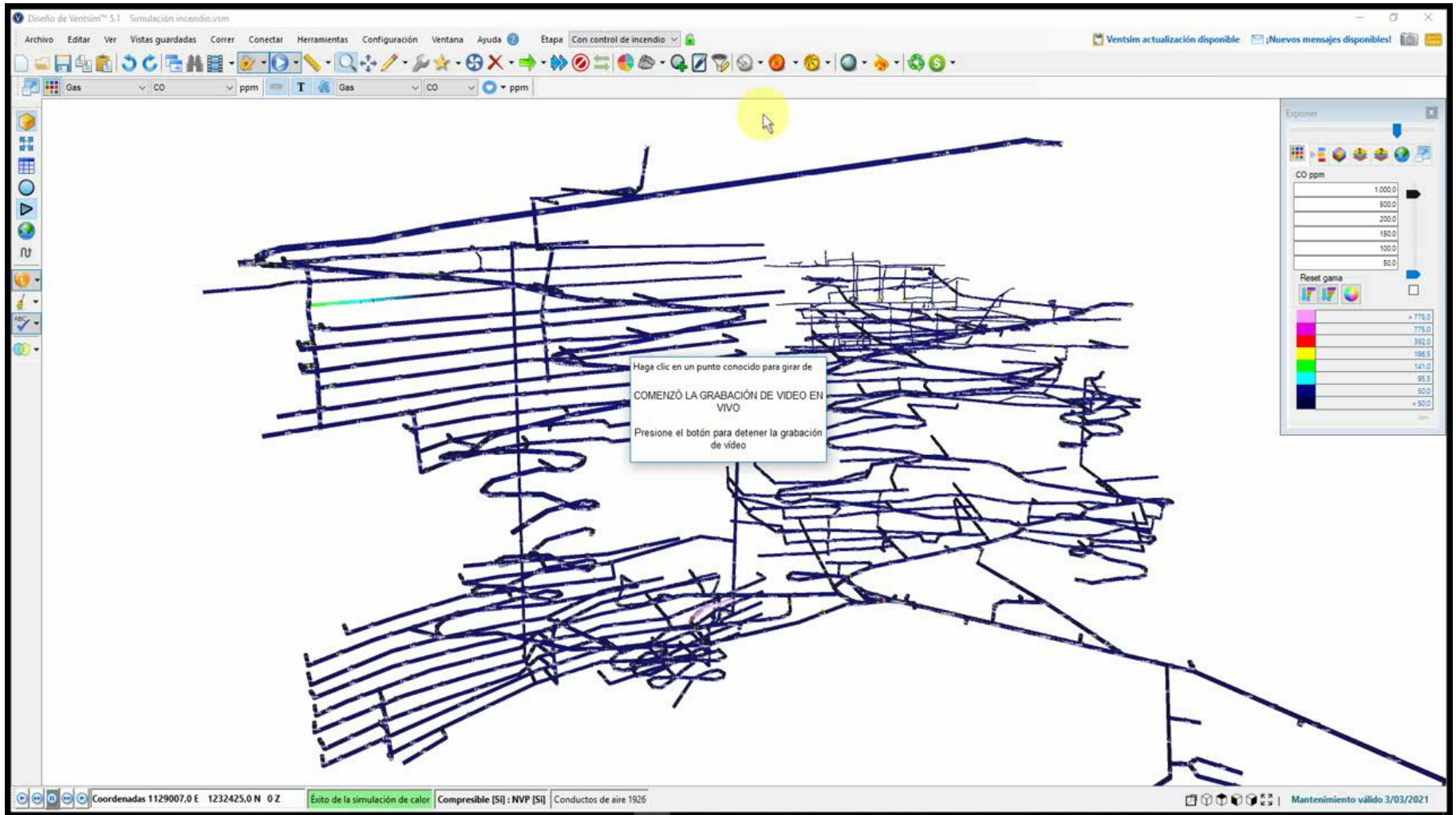
WORKS TO BE DEVELOPED



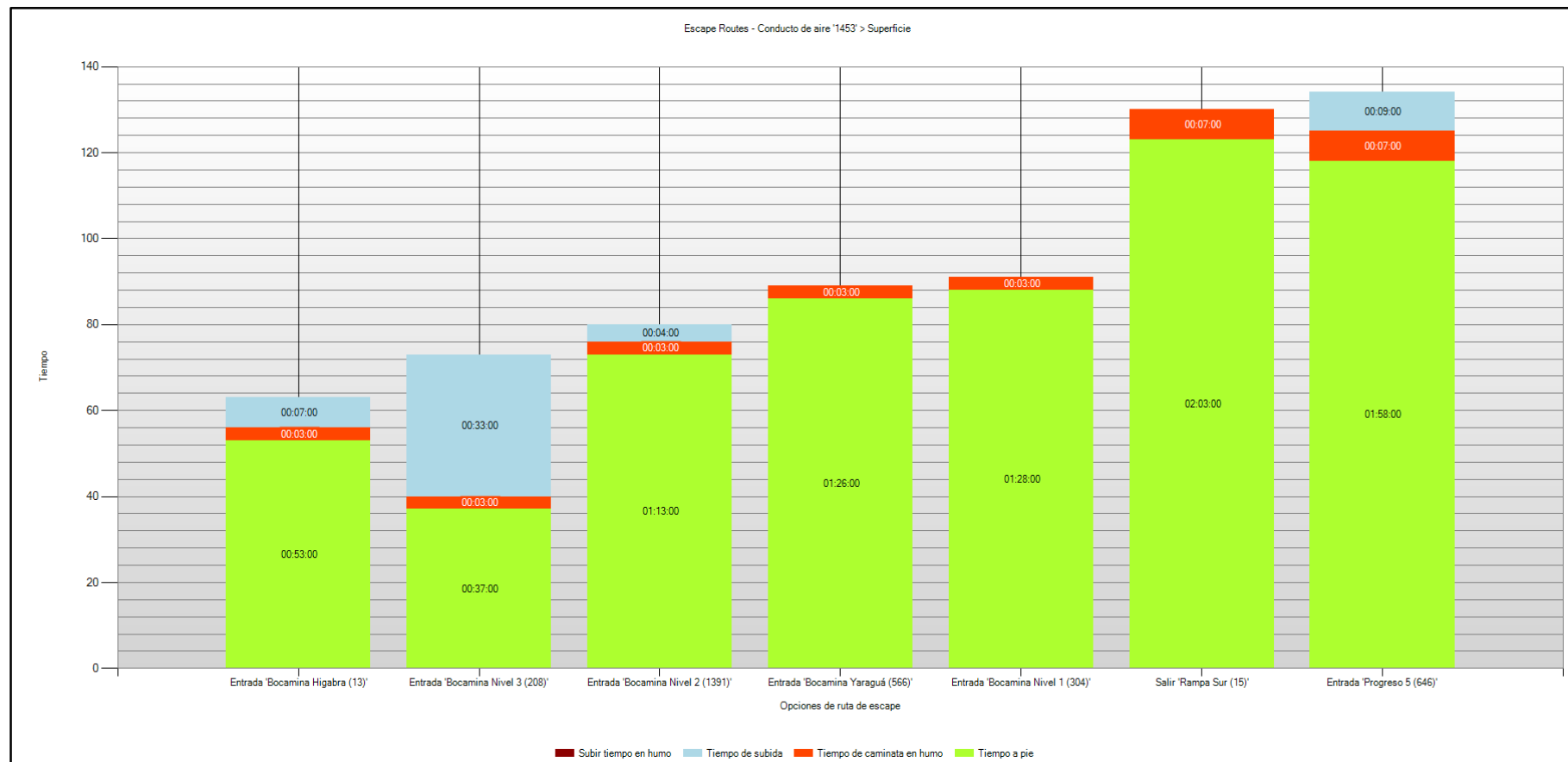
- Fireproof doors - resistant enough to endure flames over 1 hour. Meets NFPA80 and NSR10 regulations.
- Activated through a CO sensor that enables device closing.



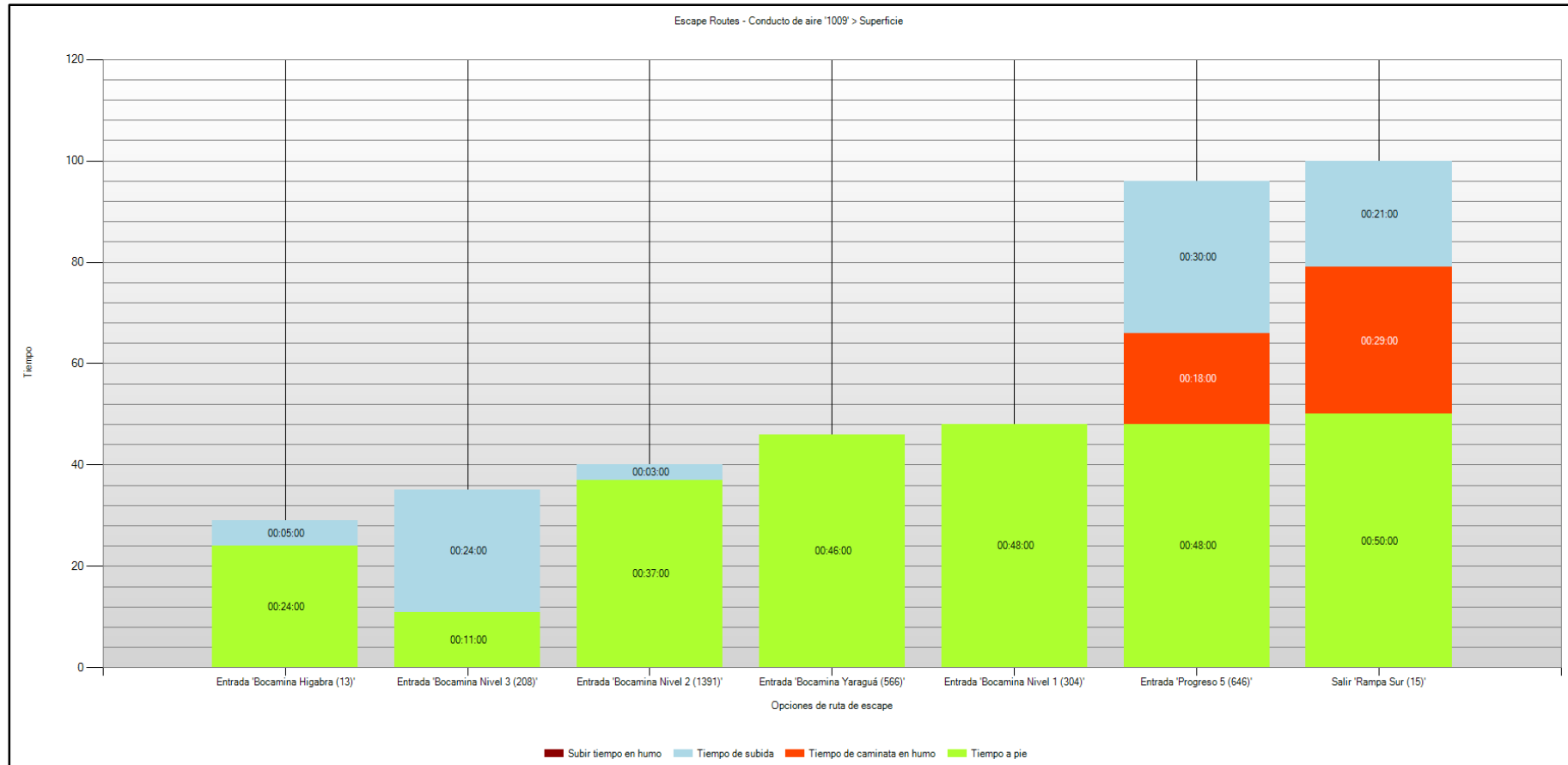
SIMULATION RESULTS



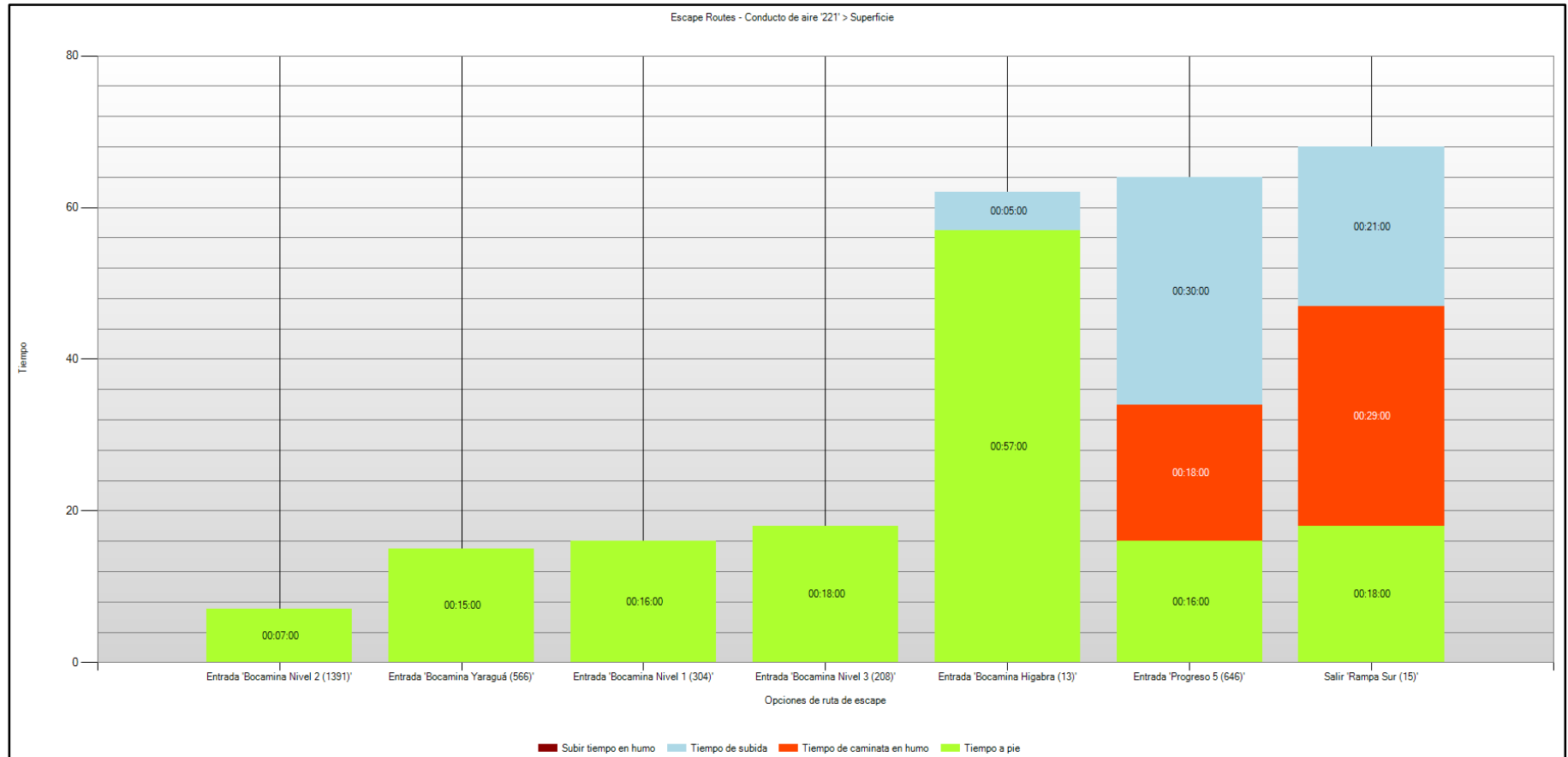
PLANNED ESCAPEWAYS – HIGABRA MINE SOUTH SEAM



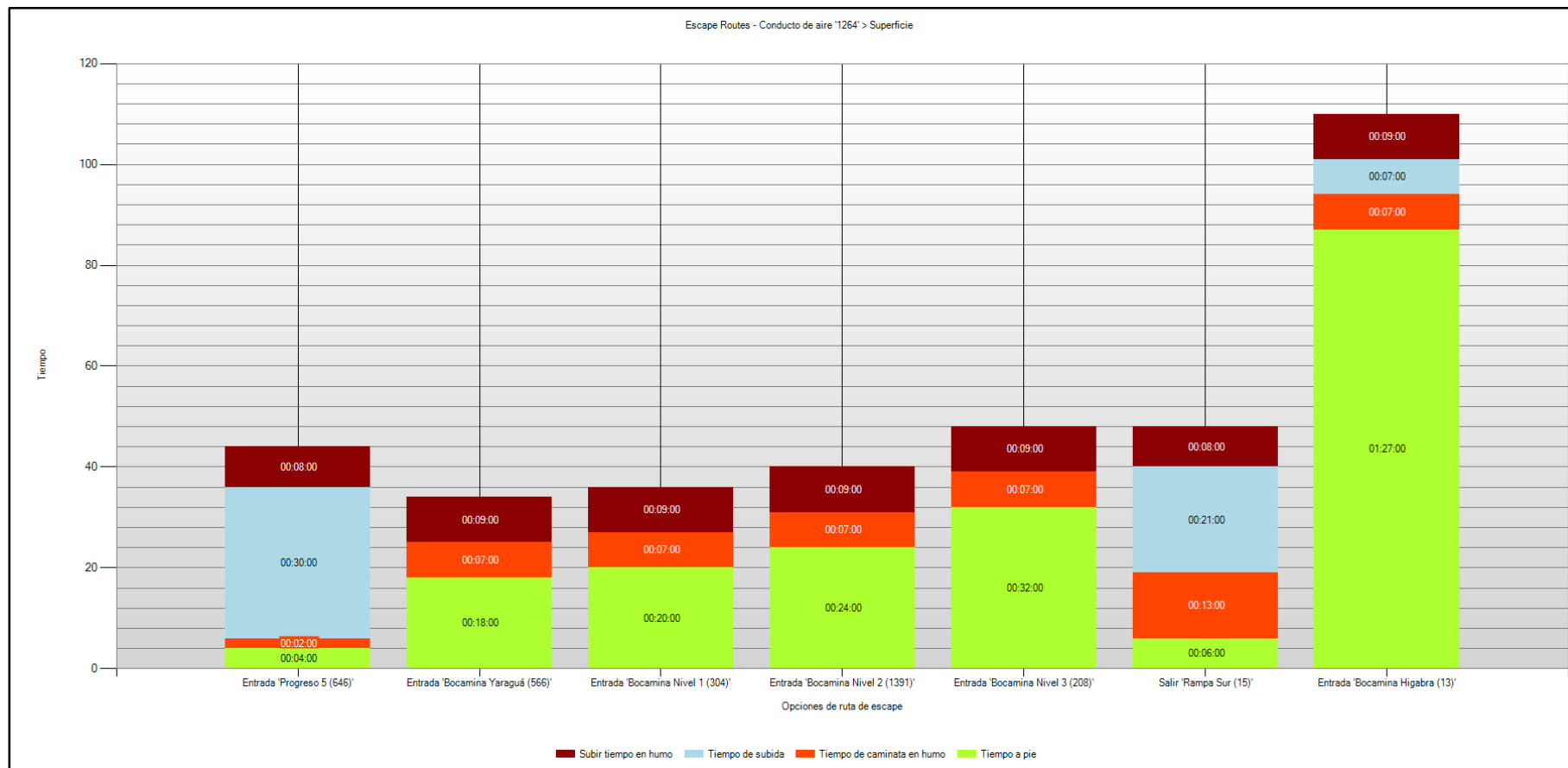
PLANNED ESCAPEWAYS – YARAGUÁ SEAM HIGABRA MINE



PLANNED ESCAPEWAYS – YARAGUÁ SEAM UPPER AREA



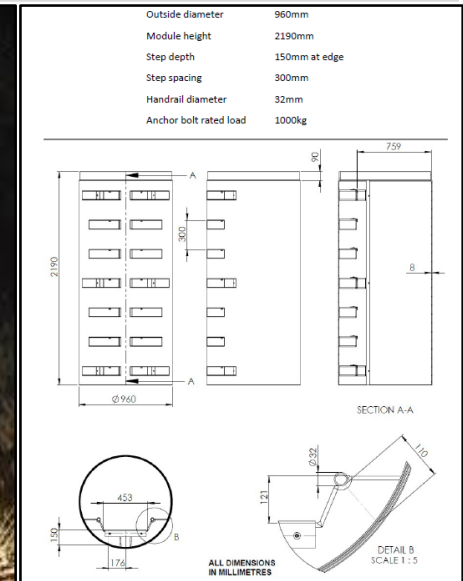
PLANNED ESCAPEWAYS – SOUTH SEAM UPPER AREA



ESCAPEWAY INSTALLATION



- Meets the WA Mine Safety and Inspection Regulations 1995, AS1657 assessment design and criteria and MSHA requirements.
- Drums will be built between levels. A ladder tube must be provided to facilitate staff evacuation, if required.

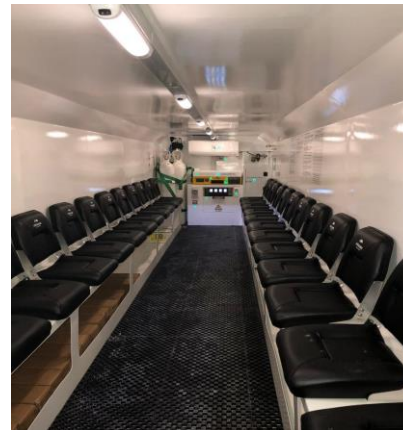
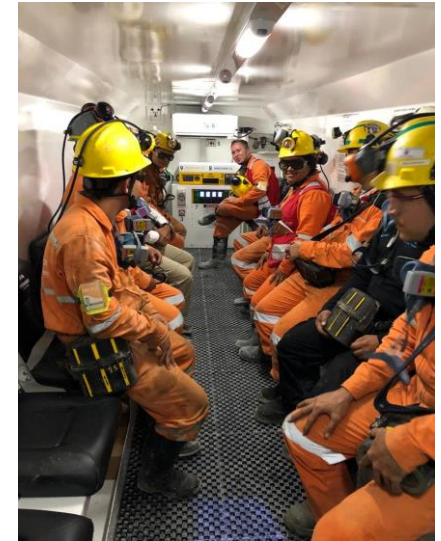


MINING SHELTER



Continental Gold currently has 6 mining shelters in the Buriticá project. The following information must be considered to use them:

- Maximum capacity: 20 people
- Maximum permanence: 72 hours
- This facility will only be used if evacuation is considered to be unsafe.
- It will be installed within 450 m from working areas





Investor Relations

+1-416-583-5611

+1-877-273-8228 (Toll-Free)

info@continentalgold.com



www.continentalgold.com

25/050/2019