

With a production of 15.3 tons in 2014, limestones is one of the most dynamic products in the Colombian domestic market. By 2014, the country produced approximately 12 Mton of gray cement representing about 80% of the limestone production in Colombia. The remaining 20% of limestone is used in the steel industry as a flux in the lime manufacture process, and in smaller amounts, for the construction industry as ornamental rock.

Limestone is widely distributed throughout the country, and is mainly associated with metamorphic and sedimentary rocks from the Paleozoic to the Neogene age, distributed in the Eastern and Central Mountain Range, and in the Caribbean region. The Limestone exploitation in Colombia is produce by construction companies focused in cement manufacturing and its derivate.

The construction boom, the infrastructure government plan for the next 10 years, and the increase in the GDP over the past decade, will demand a high consumption of Limestone in the following years.

## References

COLOMBIAN CHAMBER OF INFRASTRUCTURE. 2013. Infrastructure Log. In: [http://issuu.com/camaracci/docs/bit\\_\\_cora\\_de\\_la\\_infraestructura\\_dic](http://issuu.com/camaracci/docs/bit__cora_de_la_infraestructura_dic)

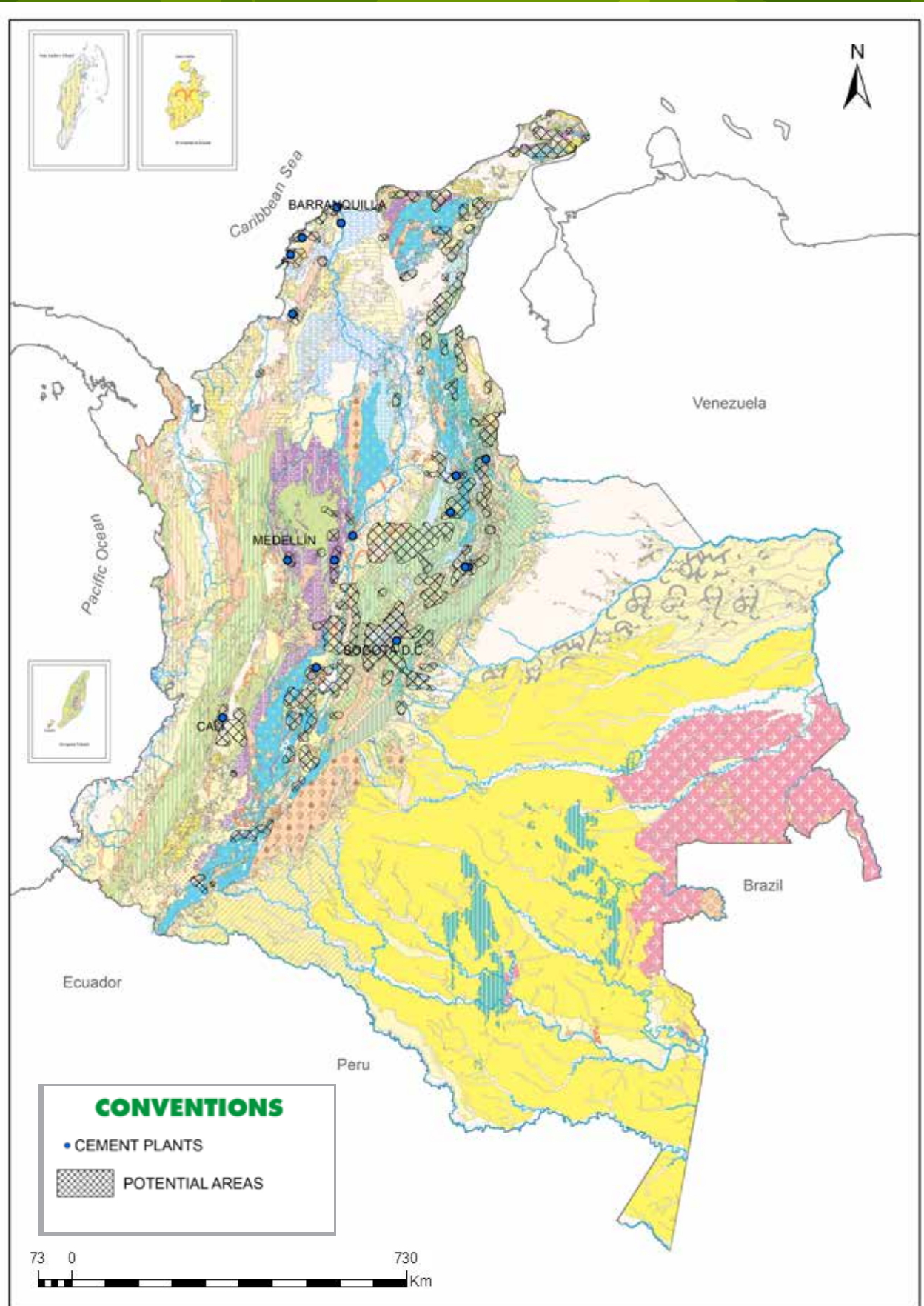
EAFIT, 2008. Structure and behavior of the cement industry in Colombia - National Academic Regulation Meeting. Medellin.

INGEOMINAS, 1987. Colombia's Mineral Resources, Volume II. Bogotá

UPME, 2015. Colombian Mining Information System - SIMCO, Official Mineral Production in Colombia. In <http://www.simco.gov.co/simco/Estadisticas/Produccion/tabid/121/Default.aspx>



# LIMESTONE



Mapa Geológico Colombiano, 2015 • Mapa de Zonas Potenciales, 2011 • Fuente: Servicio Geológico Colombiano