

With a value of 676,000 Ton for 2014, iron production is limited to a few mines that provide this mineral for the local steel industry. The most representative deposits are found in the department of Boyaca; Paz del Río, which exploits oolitic iron from Concentracion Formation (Tertiary age) and Ubala, where iron comes from limonite and hematite alterations in the Fomeque Formation (Cretaceous age).

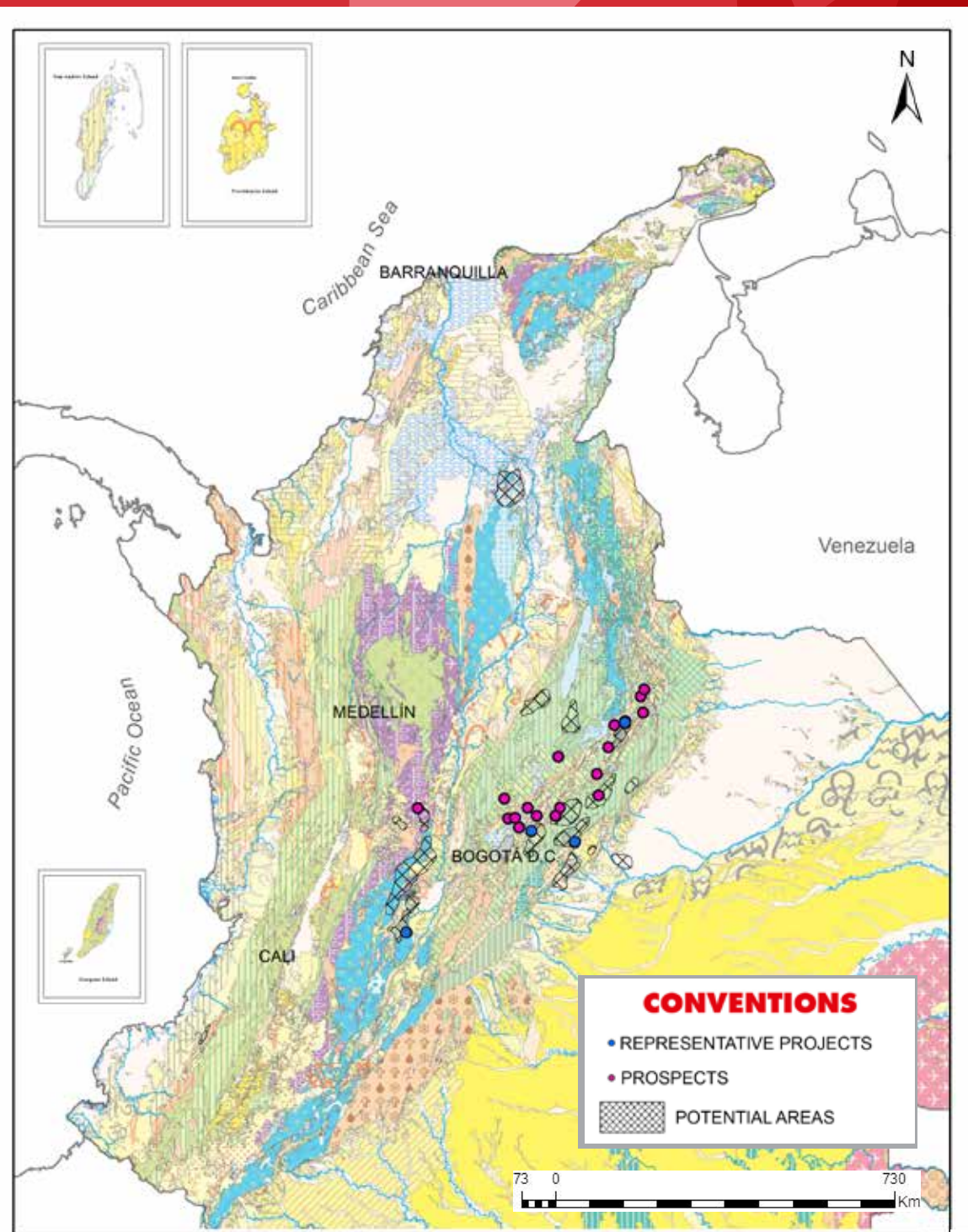
Although the country's iron production comes from deposits found in 1938. In recent years multinational companies have begun exploratory activities of iron and coal for steel production in the departments of Cundinamarca and Boyaca.

Iron production by department in 2014

| DEPARTMENT | PRODUCTION |
|--------------|-------------------|
| CUNDINAMARCA | 445.279,76 |
| BOYACÁ | 230.654,12 |
| CAUCA | 246,36 |
| TOTAL | 676.180,24 |

References

NATIONAL MINING AGENCY, 2015. National Mineral Production 2014. En <http://www.anm.gov.co/?q=regalias-contraprestaciones-economicas>
 INGEOMINAS, 1987. Recursos Minerales de Colombia, Tomo I. Bogota
www.portafolio.co7negocios/dream-team-pacific-rubiales-abrira-aceria-zipaquira
 UPME, 2013. Estudio para la caracterización del Mercado nacional e internacional de minerales. Report prepared by CRU for UPME. Bogota



Mapa Geológico Colombiano, 2015 • Mapa de Zonas Potenciales, 2011 • Fuente: Servicio Geológico Colombiano